

BODYING STOCKING MANUAL

The body stocking can help the user wear tight garments on the AlvaForm more easily

INSTALLATION

Step 1

Stretch the body stocking trouser over the form.



Step 2

Make sure the body stocking trouser is fully stretched on.



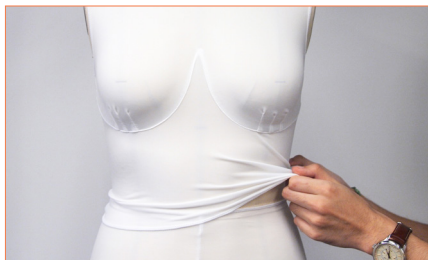
Step 3

Similarly, stretch the top body stocking over the form.



Step 4

Make sure the top body stocking is fully stretched on.



Step 5

Ensure the body stocking is held firmly onto the form.



***Congratulations!
You have successfully installed
the body stocking.***