

(v1.0)

HOW TO INSTALL HALF-SCALE ALVAFORM

COMPONENTS IN THE PACKAGE



INSTALLATION

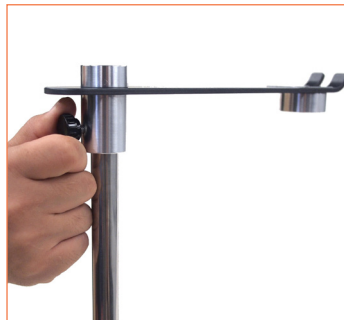
Step 1

Screw pole into the stand base and tighten the Knob(A).



Step 2

Insert form hanger onto the top of the pole and tighten the Knob(A).



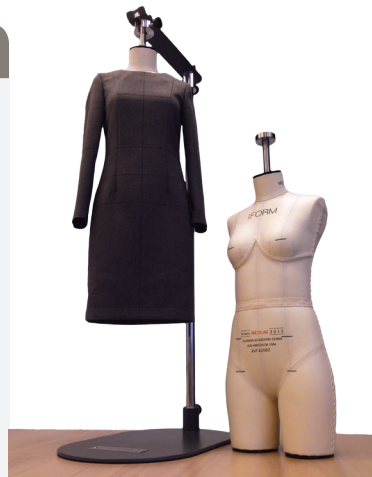
Step 3

Place your Half-Scale AlvaForm on the hanger and tighten the Knob(B).



HOW TO ROTATE THE HALF-SCALE ALVAFORM

Rotate the Half-Scale AlvaForm by loosening the knob(B) on the form hanger. DO NOT try to rotate the form with the knob(B) tightened as this will damage the pole.



CAUTION

The Stand base is heavy. Make sure the knobs are properly tightened. When transporting, hold the stand base and not from the hanger.

