

Size Range Athletic Men (36 - 52)

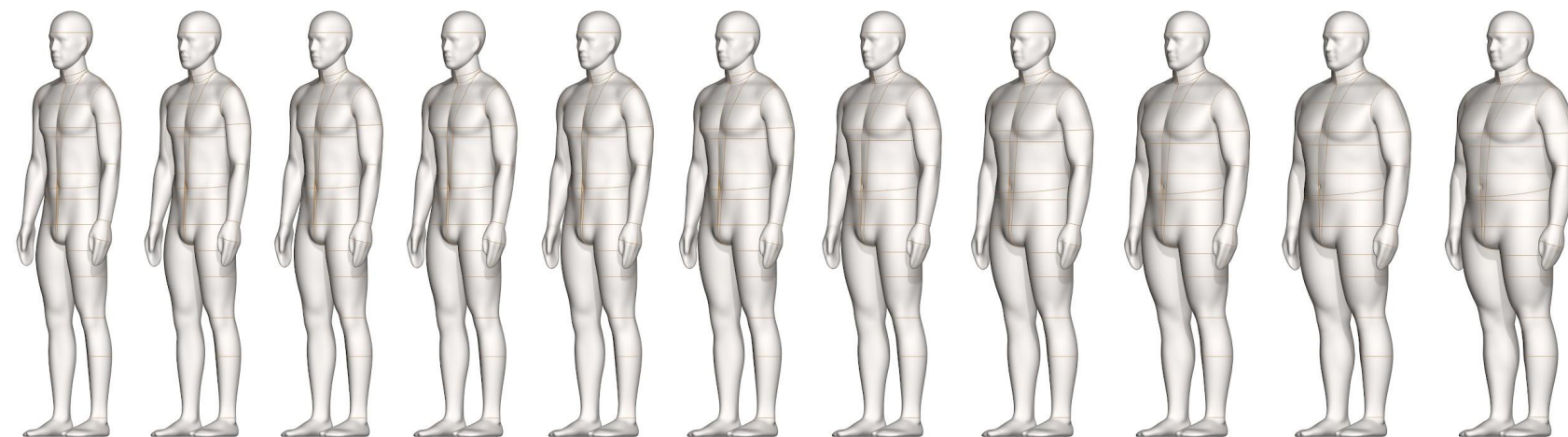
[v21.0]

For additional information
and pricing details, contact:

New York
Alvanon, Inc.
212.868.4318
us.sales@alvanon.com

Hong Kong
Alvanon HK, Ltd.
852.2423.6786
hk.sales@alvanon.com

London
Alvanon UK, Ltd.
44 (0) 207.792.5977
uk.sales@alvanon.com



STYLE:

- Full Form
- Half Form
- Slack Form

MAKE:

- Classic Form
- Tailor Form
- Soft Form

- = Classic Make
- = Soft Make

Introduction to this Series

The Alvanon Standard Series is a collection of regionally-specific sizing standards, developed by Alvanon's expert team of Consultants and Modelers using a combination of proprietary body scan data and global body, demographic, and population studies and data. Physical and Virtual AlvaForms are built using these standards.

The North America Men's series reflects the actual posture, proportions, size, and shape of Adult Men in the North American market.

AVAILABILITY:

ALVANON STANDARD NORTH AMERICA

▶ Athletic Men

NA | 36 37 38 39 40 42 44 46* 48* 50*§ 52*§

* 46 - 52 sizes are not available as Full Forms in Soft Make.

§ 50 - 52 sizes are not available as Full Forms in any Make.

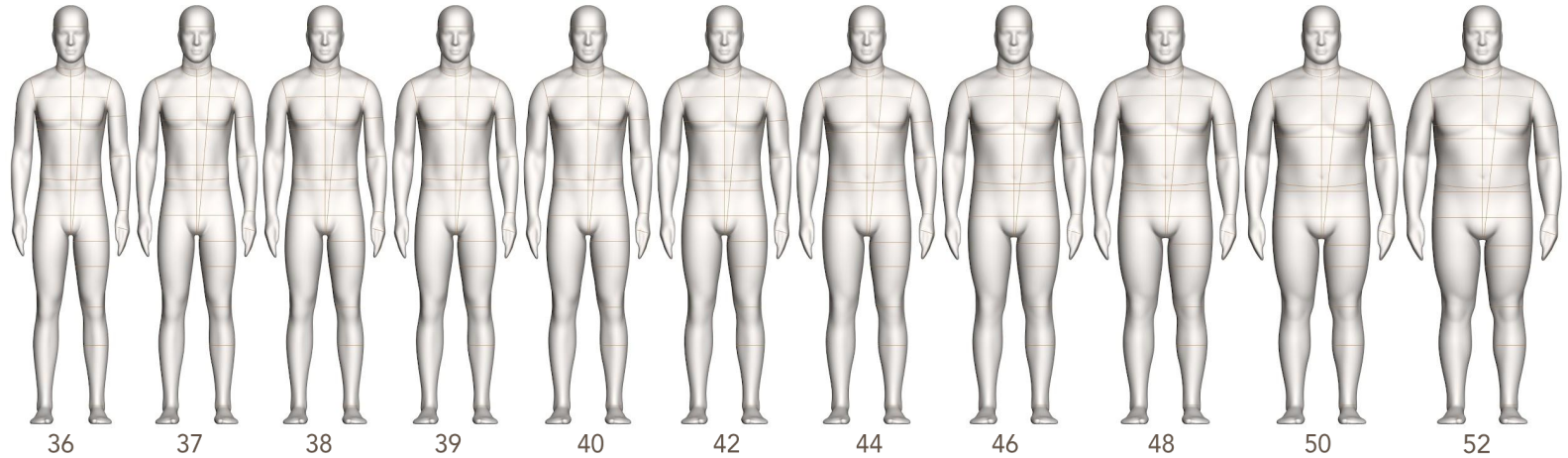
FEATURES:

STANDARD FEATURES	FULL	HALF	SLACK	*SPECIAL NOTES
Collapsible Shoulders	•	•		
Collapsible Right Hip	•		•	
Detachable Arms	• •	• •		
Detachable Shoulder Caps	• •	• •		
Soft Belly	•		•	
Detachable Left Leg	•		•	
2 Detachable Legs	•		•	
Measurement Lines	• •	• •	• •	
Twist Lock Pole	• •		• •	
Attached Hands				
Attached Feet				
Detachable Feet				
ACCESSORIES				(REQUIRES ADDITIONAL COST - REFER TO PRICE LIST)
Standing Pegs	• •			*Included with Personalization Package
Body Stocking	• •	• •	• •	*Included with Soft Forms
Detachable Head	• •			
Head Stand	• •			
Form Stand	• •	• •	• •	*Included with purchase

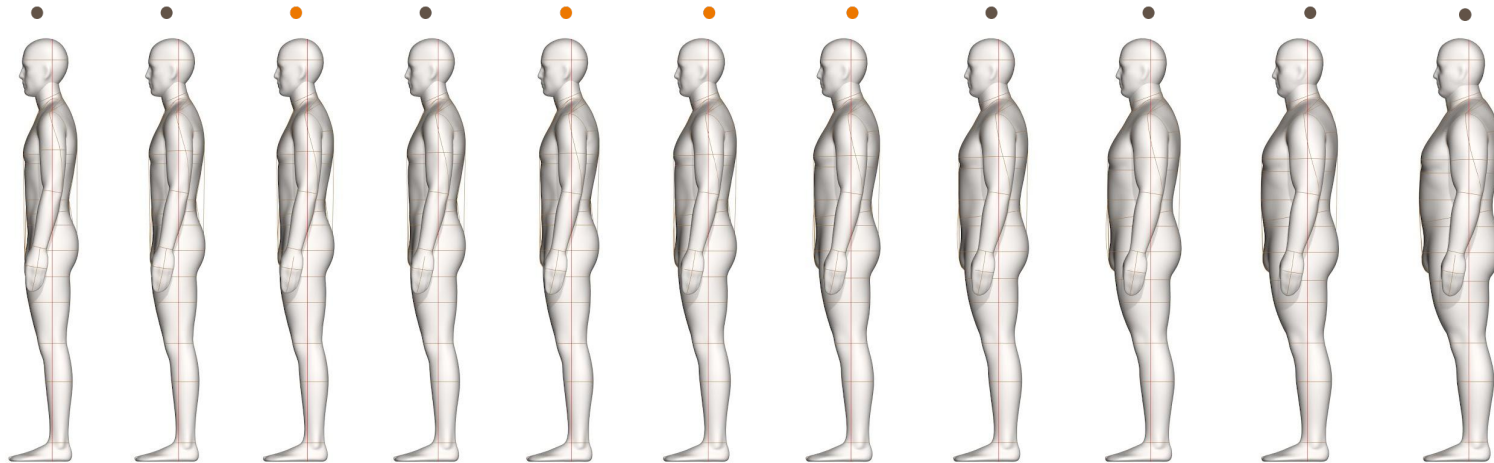
SIZE RANGE LINE-UP

Athletic Men Sizes:

FRONT VIEW



SIDE VIEW



_ All sizes available as Virtual AlvaForms through Alvanon Body Platform

- Available Off the Rack
- Available Personalized Only

MEASUREMENT CHART

Size Category	Athletic Men																					
Size / Height	36		37		38		39		40		42		44		46		48		50		52	
Neck Base	15 3/4	40	16 1/8	41	16 1/2	41.75	16 3/4	42.5	17	43	17 1/2	44.5	18 1/4	46.25	18 3/4	47.5	19 1/4	49	19 7/8	50.5	20 1/2	52
Across Shoulder	16	40.75	16 1/2	42	17	43.25	17 1/2	44.5	18	45.75	18 1/2	47	19	48.25	19 3/8	49	19 3/4	50	20 1/8	51	20 1/2	52
Chest / Bust	36	91.5	37	94	38	96.5	39	99.25	40	101.5	42	106.75	44	111.75	46	116.75	48	121.75	50	127	52	132.25
Waist	28 1/2	72.5	29 1/2	75	30 1/2	77.5	31 1/2	80	32 1/2	82.5	34 1/2	87.5	36 3/4	93.5	39	99	41 1/4	104.75	43 1/2	110.5	46	116.75
CF Neck to Waist	15 1/2	39.25	15 1/2	39.25	15 1/2	39.5	15 1/2	39.5	15 5/8	39.5	15 5/8	39.75	15 5/8	39.75	15 3/4	39.75	15 3/4	40	15 7/8	40.25	16	40.5
CB Neck to Waist	17 3/4	45	17 3/4	45	17 3/4	45	17 3/4	45.25	17 3/4	45.25	17 3/4	45.25	17 7/8	45.25	17 7/8	45.25	17 7/8	45.5	18	45.75	18	45.5
Low Hip	35	89	36	91.5	37	94	38	96.5	39	99	41	104	43	109	44 3/4	113.75	46 1/2	118	48 1/4	122.75	50	127
Inseam	32	81.25	32	81.25	32	81.25	32	81.25	32	81.25	32	81.25	31 3/4	80.75	31 5/8	80.5	31 1/2	80	31 3/8	79.75	31 1/4	79.5
Total Rise	29 5/8	75.25	29 3/4	75.5	29 7/8	76	30 1/8	76.5	30 3/8	77	30 7/8	78.25	31 5/8	80.25	32 1/4	82	32 7/8	83.75	33 1/2	85.25	34 1/4	87.25
Thigh	22	56	22 3/8	56.75	22 3/4	57.75	23 1/8	58.75	23 1/2	59.75	24 1/4	61.5	25	63.5	26	66.25	27	68.75	28	71.25	29	73.75
CB Neck to Wrist	32 3/8	82	32 5/8	82.75	32 7/8	83.5	33 1/8	84	33 3/8	84.75	33 3/4	85.5	34 1/2	86.5	34 3/8	87.5	34 3/4	88.25	35 1/8	89.25	35 1/2	90.25
Bicep	12 1/2	31.75	12 3/4	32.5	13	33	13 1/4	33.5	13 1/2	34.25	14	35.5	14 1/2	37	15 1/8	38.5	15 3/4	40	16 3/8	41.5	17	43.25
Total Height	71	180.25	71	180.25	71	180.25	71	180.25	71	180.25	71	180.25	71	180.25	71	180.25	71	180.25	71	180.25	71	180.25
Head Circumference	22 1/4	56.5	22 3/8	56.75	22 1/2	57.25	22 5/8	57.5	22 3/4	57.75	22 7/8	58.25	23	58.5	23 1/8	58.75	23 1/4	59	23 1/2	59.75	23 3/4	60.5

INCHES
 CENTIMETERS