

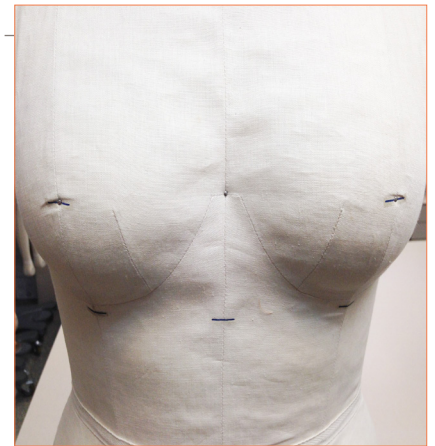
# ALVAFORM CARE MANUAL

## FABRIC WRINKLING PROBLEM

### How to solve my fabric wrinkling problem?

The AlvaForm is covered with natural linen fabric and some wrinkling may occur in high humidity conditions (around 90% humidity).

It is recommended that the AlvaForm is stored in an air-conditioned room (85% humidity or lower) to reduce fabric wrinkling.



### Tools Required

- Large plastic bag (Preferably large enough to cover the entire AlvaForm)
- Scissors
- Hair Dryer
- Any hair dryer holder (like yellow pages)
- AlvaFormStand

### Step 1

Cut out one of the corners of the large plastic bag.



### Step 2

Place the large plastic bag around the top of the AlvaForm, with the cut corner at the top.



### Step 3

Make sure that the large plastic bag covers as much of the AlvaForm as possible from top to bottom as this will trap the air inside.



### Step 4



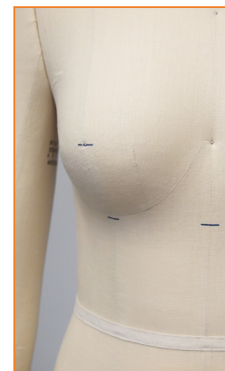
Use the hand dryer holder, such as the yellow pages below, to secure the position of the hand dryer and the direction of the hot air coming out.

### Step 5



Attention: The hot air coming out of the hair dryer should be 5 minutes, repeat this process if needed. During this time, someone should be monitoring the process as a precaution.

### Step 6



Congratulations! You have completed the drying process and the form should have returned to normal. If there are some areas of the AlvaForm still wrinkled, you can directly dry that region with the hair dryer.

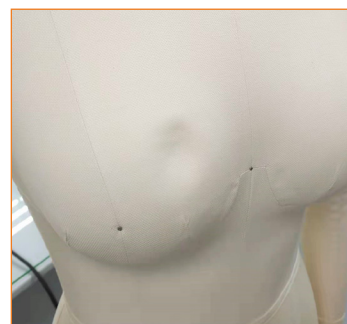
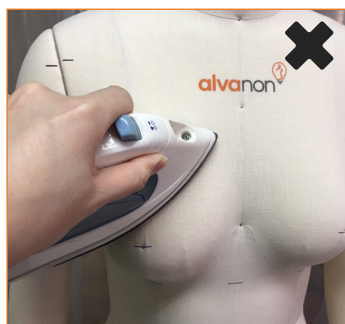
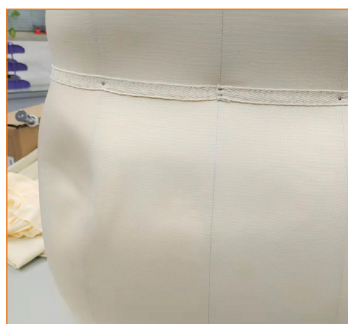
## IMPORTANT CARE INSTRUCTION



### CAUTION

**IRONING** or **STEAMING** directly on the form will damage the form and **VOID THE WARRANTY**.

Please refrain from using any tools that exert high heat onto the form. If you have any questions, please contact our customer service.



## PROTECT DETACHABLE HANDS AND FEET

### How to keep your detachable hands and feet in good shape?

To prevent the detachable hands and feet from being damaged or misplaced, they should be properly stored in the bag after usage.



#### Step 1

When the detachable hands and feet are not in use, it is best to place them in protective gloves and socks.



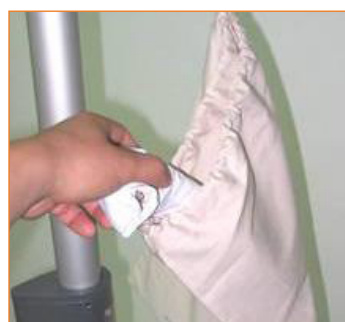
#### Step 2

Every time after use, please remove the detachable hands and feet of the form and put them in the protective gloves and socks.



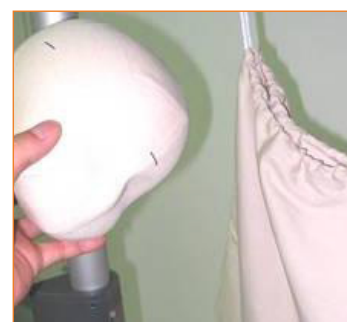
#### Step 3

Put the protected hands and feet into the bag for safe storage, and hang the bag on the same stand as the AlvaForm.



#### Step 4

If the AlvaForm has a head, it can also be placed in the bag as well to prevent it from getting dirty or misplaced.



## MOLD PREVENTION

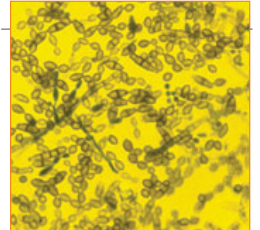
### Mold Prevention on AlvaForms

AlvaForms are wrapped by layers of linen and cotton rib. The fabric will absorb the moisture in the air when the AlvaForm is exposed to a humid environment, where mold can grow.



### Information about Mold

Mold and mold spores are everywhere. When mold spores land on a damp spot indoors, they may begin growing. It is important to maintain a clean and dry environment, such as an air-conditioned room.



#### CAUTION

There is NO practical way to eliminate all molds and mold spores in the indoor environment. The way to control indoor mold growth is to **CONTROL MOISTURE**.

## MOLD PREVENTION – FAVORABLE HUMIDITY FOR MOLDING

Humidity **above 70%** can easily lead to mold growth.

### Recommendations

Use a humidity indicator to measure the relative humidity

### Recommended Relative Humidity Level for Clients:

Summer:  
50-55%

Winter:  
30-35%

### Air Circulation

Air circulation helps control moisture levels through evaporation.

### Recommendations

The followings can be installed in localized areas to improve air circulation, for example in design studio:

- Portable dehumidifier
- Fan

### Cleanliness

Keeping things clean in the storage area, as the dirt, may also prevent mold from growing.



#### CAUTION

The following sources where mold is likely to grow should be kept clean:

- Walls
- Closets
- Basements
- Clothing and other textiles