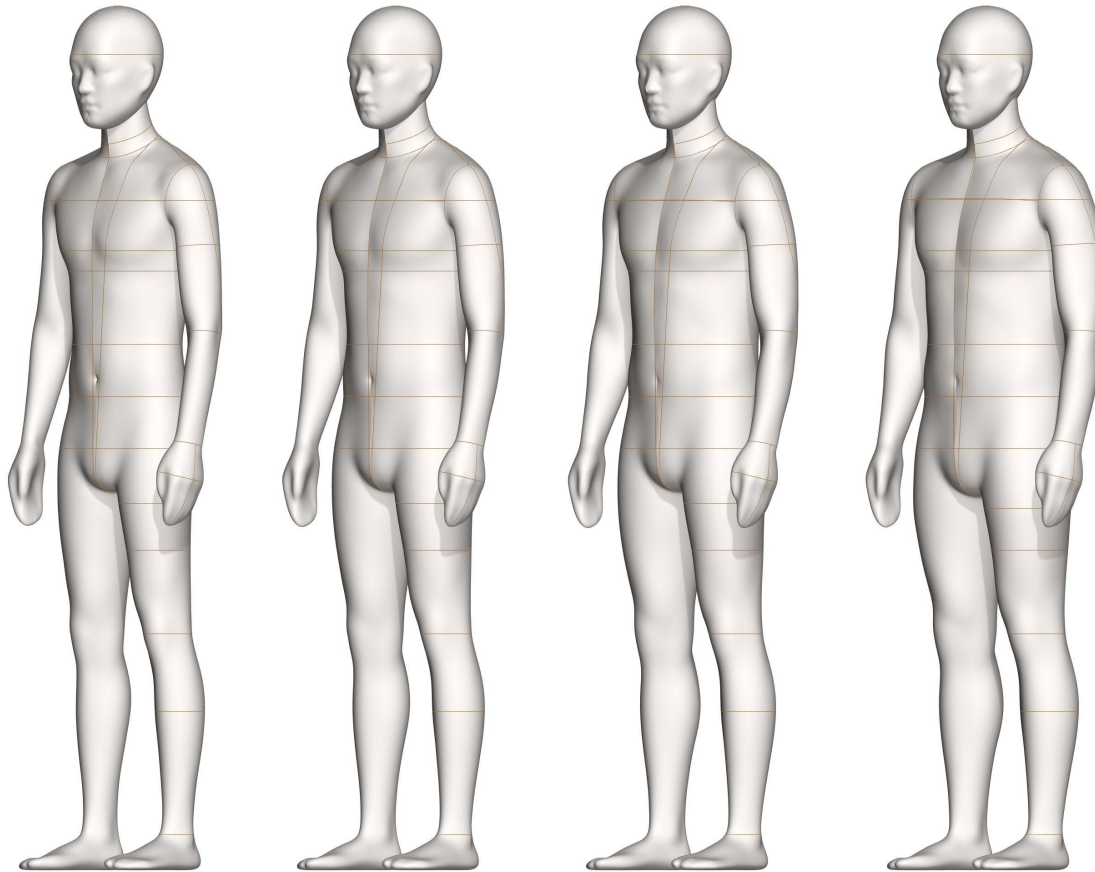


ALVANON STANDARD CHINA | YOUTH MEN

Size Range Youth Men (S - XL)

alvaFORM

[v22.0]



For additional information
and pricing details, contact:

New York
Alvanon, Inc.
212.868.4318
us.sales@alvanon.com

Hong Kong
Alvanon HK, Ltd.
852.2423.6786
hk.sales@alvanon.com

London
Alvanon UK, Ltd.
44 (0) 207.792.5977
uk.sales@alvanon.com

STYLE:

- Full Form
- Half Form
- Slack Form

MAKE:

- Classic Form
- Tailor Form
- Soft Form

- = Classic Make
- = Soft Make

Introduction to this Series

The Alvanon Standard Series is a collection of regionally-specific sizing standards, developed by Alvanon's expert team of Consultants and Modelers using a combination of proprietary body scan data and global body, demographic, and population studies and data. Physical and Virtual AlvaForms are built using these standards.

The China Youth Mens Standard reflects the actual posture, proportions, size, and shape of Youth Men customers in the Chinese Market.

AVAILABILITY:

ALVANON STANDARD CHINA

▶ China Youth Men

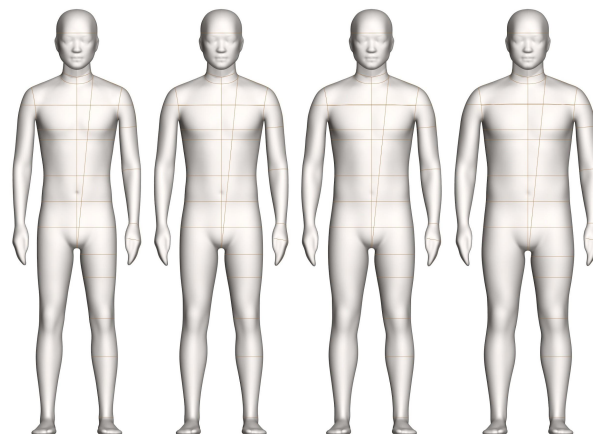
CN | S M L XL

FEATURES:

STANDARD FEATURES	FULL	HALF	SLACK	*SPECIAL NOTES
Collapsible Shoulders	•	•		
Collapsible Right Hip	•		•	
Detachable Arms	••	••		
Detachable Shoulder Caps	••	••		
Soft Belly	•		•	
Detachable Left Leg	•		•	
2 Detachable Legs	•		•	
Measurement Lines	••	••	••	
Twist Lock Pole	••		••	
Attached Hands				
Attached Feet				
Detachable Feet				
ACCESSORIES	(REQUIRES ADDITIONAL COST - REFER TO PRICE LIST)			
Standing Pegs	••			*Included with Personalization Package
Body Stocking	••	••	••	*Included with Soft Forms
Detachable Head	••			
Head Stand	••			
Form Stand	••	••	••	*Included with purchase

FRONT VIEW

Youth Men Sizes:



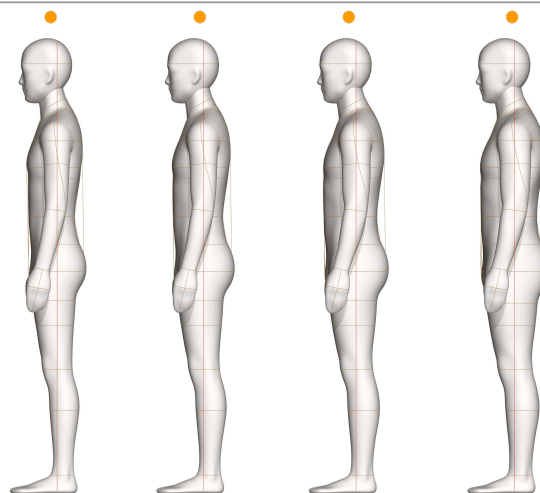
S

M

L

XL

SIDE VIEW



_ All sizes available as Virtual AlvaForms through Alvanon Body Platform

- Available Off the Rack
- Available Personalized Only

Size Category	Youth Men							
	S		M		L		XL	
Neck Base	15 5/8	39.75	16	40.5	16 3/8	41.5	16 7/8	42.75
Across Shoulder	16 1/8	41	16 5/8	42	16 7/8	43	17 1/2	44.25
Chest / Bust	34 5/8	88	36 1/4	92	37 3/4	96	40 1/8	102
Waist	28	71	30	76	31 7/8	81	34 5/8	88
CF Neck to Waist	15 3/8	39.25	15 1/2	39.25	15 1/2	39.25	15 1/2	39.25
CB Neck to Waist	17 7/8	45.25	17 7/8	45.25	17 7/8	45.5	18	45.5
Low Hip	34 5/8	88	36 1/4	92	37 3/4	96	40 1/4	102
Inseam	30 3/4	78	30 3/4	78	30 3/4	78	30 3/8	77
Total Rise	29 1/4	74.25	29 5/8	75	29 7/8	76	31 1/8	79
Thigh	19 1/2	49.5	20 5/8	52.25	21 3/4	55	23 1/4	59
CB Neck to Wrist	32	81.25	32 3/8	82.25	32 3/4	83.25	33 1/8	84
Bicep	10 7/8	27.5	11 1/2	29	12	30.5	12 7/8	32.5
Total Height	70 1/8	178	70 1/8	178	70 1/8	178	70 1/8	178
Head Circumference	23	58.5	23 1/4	59	23 1/2	59.5	23 1/2	59.5

 INCHES

 CENTIMETERS