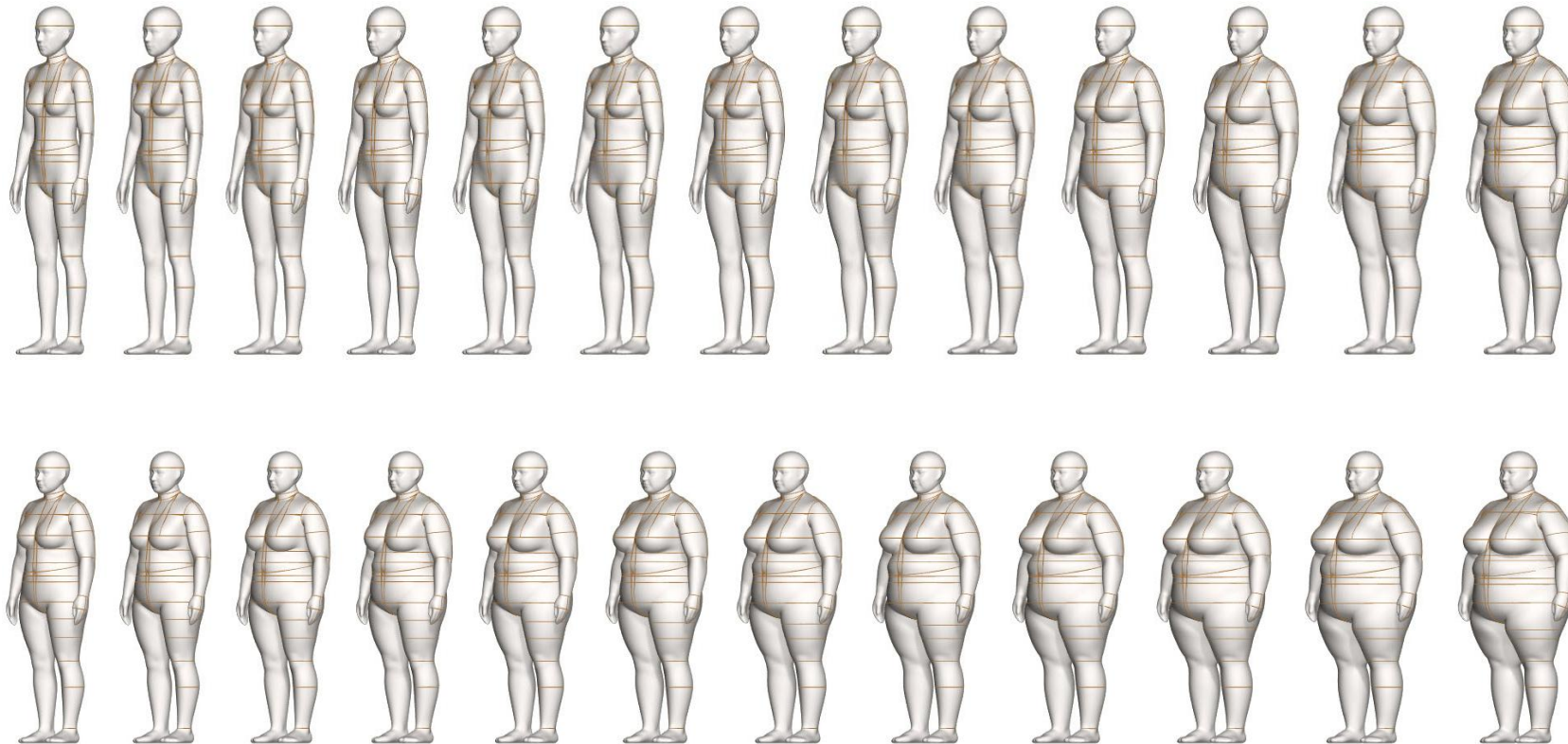


ALVANON STANDARD NORTH AMERICA | PETITE

Size Range Petite (00P - 22P)
 Petite Plus (14WP - 36WP)

alvaFORM

[v23.1]



For additional information
and pricing details, contact:

New York
Alvanon, Inc.
212.868.4318
us.sales@alvanon.com

Hong Kong
Alvanon HK, Ltd.
852.2423.6786
hk.sales@alvanon.com

London
Alvanon UK, Ltd.
44 (0) 207.792.5977
uk.sales@alvanon.com

Shanghai
Alvanon China, Ltd.
86.021.6237.3739
cn.sales@alvanon.com

STYLE:

- Full Form
- Half Form
- Slack Form

MAKE:

- Classic Form
- Tailor Form
- Soft Form

- = Classic Make
- = Soft Make

Introduction to this Series

The Alvanon Standard Series is a collection of regionally-specific sizing standards, developed by Alvanon's expert team of Consultants and Modelers using a combination of proprietary body scan data and global body, demographic, and population studies and data. Physical and Virtual AlvaForms are built using these standards.

The North America Petite Womens Standard reflects the actual posture, proportions, size, and shape of Adult Petite Women customers in the North American market. The Petite sizing standard represents more commercially traditional forms and the Petite Plus Women offers extended sizing for the Women's range.

AVAILABILITY:

ALVANON STANDARD NORTH AMERICA

- ▶ Petite
- ▶ Petite Plus

NA

00P 0P 2P 4P 6P 8P 10P 12P 14P 16P 18P 20P 22P

NA

14WP 16WP 18WP 20WP 22WP 24WP 26WP* 28WP* 30WP* 32WP* 34WP 36WP

*26WP - 32WP Sizes are not available as Full Forms in Soft Make.

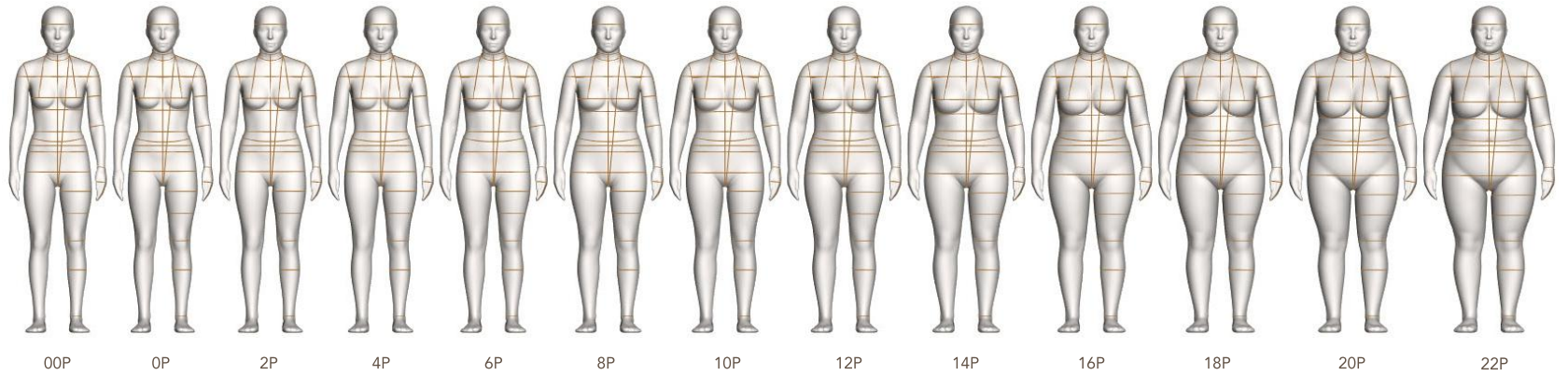
34WP - 36WP are available as virtual forms only.

FEATURES:

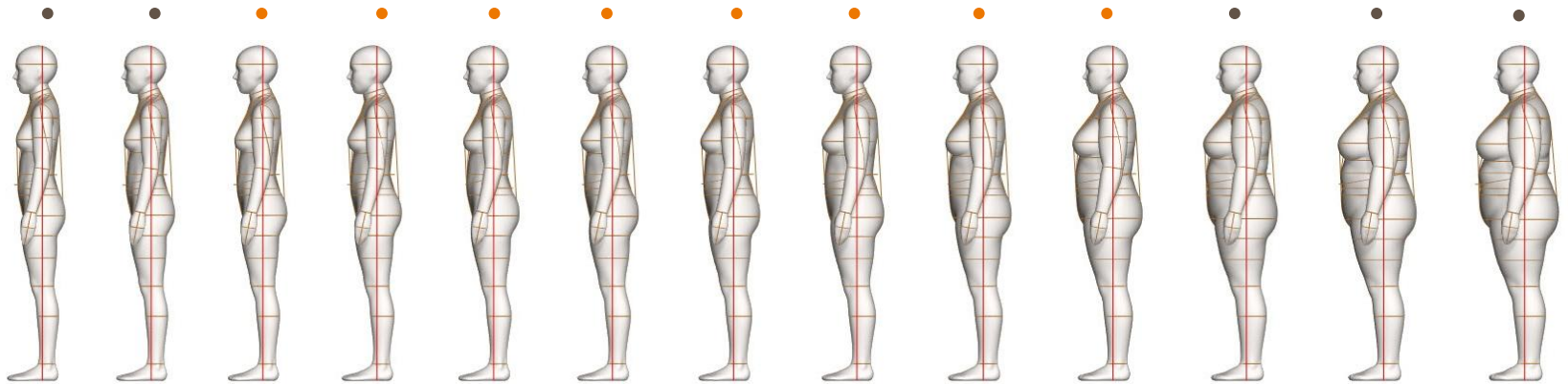
STANDARD FEATURES	FULL	HALF	SLACK	*SPECIAL NOTES
Collapsible Shoulders	•	•		
Collapsible Right Hip	•		•	
Detachable Arms	••	••		
Detachable Shoulder Caps	••	••		
Soft Belly	•		•	
Detachable Left Leg	•		•	
2 Detachable Legs	•		•	
Measurement Lines	••	••	••	
Twist Lock Pole	••		••	
Attached Hands				
Attached Feet				
Detachable Feet				
ACCESSORIES	(REQUIRES ADDITIONAL COST - REFER TO PRICE LIST)			
Standing Pegs	••			*Included with Personalization Package
Body Stocking	••	••	••	*Included with Soft Forms
Detachable Head	••			
Head Stand	••			
Wearable Soft Belly	••	••		*Available in 7M / 9M Only
Form Stand	••	••	••	*Included with purchase

Petite Sizes:

FRONT VIEW



SIDE VIEW



_ All sizes available as Virtual AlvaForms through Alvanon Body Platform.

_NA Petite sizes 16P-22P and NA Petite Plus sizes 14WP-20WP are identical bodies.

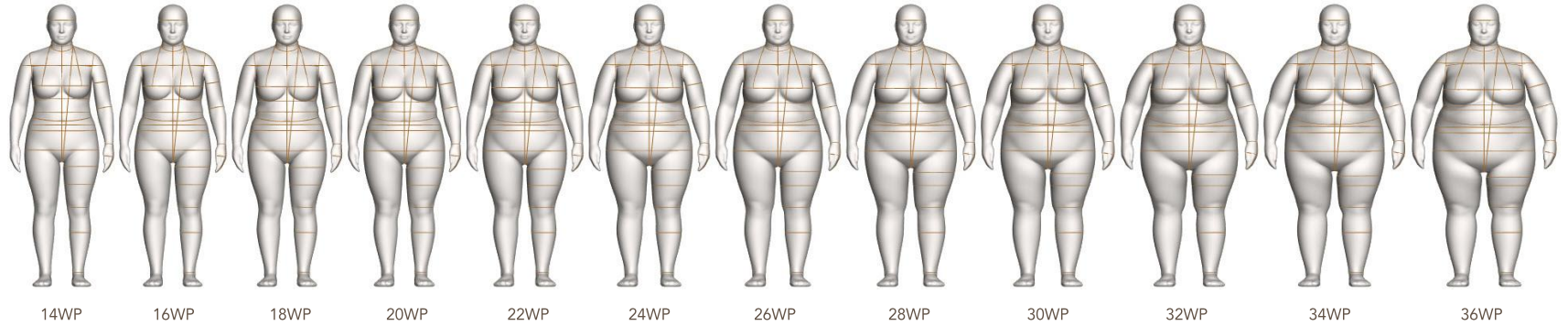
- Available Off the Rack
- Available Personalized Only

Size Category	Petite																									
	00P		0P		2P		4P		6P		8P		10P		12P		14P		16P		18P		20P		22P	
Neck Base	13 3/4	34.75	13 7/8	35.25	14	35.5	14 1/8	35.75	14 1/4	36.25	14 1/2	37	14 3/4	37.25	15	38	15 1/4	38.75	15 5/8	39.5	16	40.5	16 3/8	41.5	16 3/4	42.5
Across Shoulder	14 7/8	37.75	15	38.25	15 1/8	38.5	15 1/4	38.75	15 3/8	39	15 1/2	39.25	15 5/8	39.75	15 3/4	40	16	40.5	16 1/4	41.25	16 1/2	42	16 3/4	42.5	17	43
Chest / Bust	31 1/2	80	32 1/2	82.5	33 1/2	85	34 1/2	87.75	35 1/2	90.25	36 1/2	92.75	37 1/2	95.25	39	99.25	41	104.25	43	109.25	45	114.25	47	119.25	49	124.5
Waist	25	63.5	26	66	27	68.75	28	71.25	29	73.75	30	76.25	31	78.75	32 1/2	82.5	34 1/2	87.5	36 3/4	93.25	39	99	41 1/4	104.75	43 1/2	110.5
CF Neck to Waist	13 3/4	35	13 7/8	35.25	13 7/8	35.25	13 7/8	35.25	13 7/8	35.25	14	35.5	14	35.5	14 1/8	35.75	14 1/4	36.25	14 3/8	36.75	14 1/2	37	14 5/8	37	14 3/4	37.5
CB Neck to Waist	15 1/2	39.25	15 1/2	39.25	15 1/2	39.25	15 1/2	39.25	15 1/2	39.25	15 1/2	39.5	15 1/2	39.5	15 5/8	39.5	15 5/8	39.75	15 5/8	39.75	15 3/4	40	15 3/4	40	15 3/4	40
Low Hip	34 1/2	87.75	35 1/2	90	36 1/2	92.75	37 1/2	95.25	38 1/2	98	39 1/2	100.25	40 1/2	102.75	42	106.5	43 3/4	111	45 1/2	115.75	47 1/2	120.75	49 1/2	125.75	51 1/2	130.75
Inseam	28	71	28	71	28	71.25	28	71	28	71	28	71	28	71	27 7/8	70.75	27 3/4	70.5	27 5/8	70	27 1/2	69.75	27 3/8	69.5	27 1/4	69.25
Total Rise	25 1/2	64.75	25 5/8	65	25 3/4	65.25	25 7/8	65.75	26 1/8	66.5	26 1/2	67.25	26 7/8	68.5	27 5/8	70	28 3/8	72.25	29 3/8	74.75	30 1/2	77.5	31 5/8	80.5	32 3/4	83
Thigh	20	51	20 5/8	52.5	21 1/4	54.25	21 7/8	55.5	22 1/2	57	23 1/8	58.75	23 3/4	60.25	24 1/2	62.25	25 1/2	64.75	26 1/2	67.25	27 5/8	70.25	28 3/4	73	29 7/8	76
CB Neck to Wrist	28 1/2	72.5	28 5/8	72.5	28 3/4	73	28 3/4	73.25	28 7/8	73.5	29	73.5	29 1/8	74	29 3/8	74.5	29 5/8	75.25	29 7/8	76	30 1/4	76.75	30 5/8	77.75	31	78.75
Bicep	10 3/8	26.25	10 5/8	26.75	10 7/8	27.5	11 1/8	28.25	11 3/8	28.75	11 3/4	30	12 1/4	31	12 7/8	32.5	13 1/2	34.25	14 1/8	35.75	14 3/4	37.5	15 3/8	39	16	40.75
Total Height	62 1/2	158.75	62 1/2	158.75	62 1/2	158.75	62 1/2	158.75	62 1/2	158.75	62 1/2	158.75	62 1/2	158.75	62 1/2	158.75	62 1/2	158.75	62 1/2	158.75	62 1/2	158.75	62 1/2	158.75	62 1/2	158.75
Head Circumference	22 1/8	56.25	22 1/8	56.25	22 1/8	56.25	22 1/4	56.75	22 1/4	56.5	22 1/4	56.75	22 3/8	57	22 3/8	57	22 1/2	57.25	22 5/8	57.5	22 3/4	58	22 7/8	58.25	23	58.5

INCHES
 CENTIMETERS

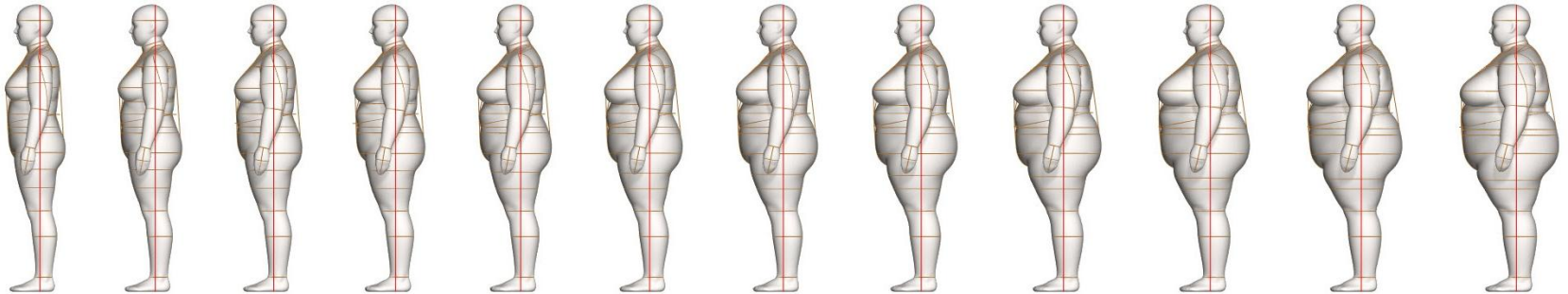
Petite Plus Sizes:

FRONT VIEW



14WP 16WP 18WP 20WP 22WP 24WP 26WP 28WP 30WP 32WP 34WP 36WP

SIDE VIEW



_ All sizes available as Virtual AlvaForms through Alvanon Body Platform.

_NA Petite Plus sizes 14WP-20WP and NA Petite sizes 16P-22P are identical bodies.

- Available Off the Rack
- Available Personalized Only

MEASUREMENT CHART

Size Category	Petite Plus																									
Size / Height	14WP	16WP	18WP	20WP	22WP	24WP	26WP	28WP	30WP	32WP	34WP	36WP														
Neck Base	15 5/8	39.5	16	40.5	16 3/8	41.5	16 3/4	42.5	17 1/8	43.75	17 1/2	44.5	17 7/8	45.25	18 1/4	46.5	18 5/8	47.25	19	48.25	19 3/8	49.25	19 3/4	50		
Across Shoulder	16 1/4	41.25	16 1/2	42	16 3/4	42.5	17	43	17 1/4	43.75	17 1/2	44.25	17 3/4	45	18	45.75	18 1/4	46.25	18 1/2	47	18 3/4	47.75	19	48.25		
Chest / Bust	43	109.25	45	114.25	47	119.25	49	124.5	51	129.5	53	134.5	55	139.75	57	144.75	59	149.75	61	155	63	160	65	165.25		
Waist	36 3/4	93.25	39	99	41 1/4	104.75	43 1/2	110.5	45 1/2	115.5	47 1/2	120.5	49 1/2	125.75	51 1/2	130.75	53 1/2	135.75	55 1/2	141	57 1/2	146.25	59 1/2	151.25		
CF Neck to Waist	14 3/8	36.75	14 1/2	37	14 5/8	37	14 3/4	37.5	14 7/8	38	14 7/8	38	15 1/8	38.25	15 1/4	38.75	15 3/8	39	15 1/2	39.5	15 3/4	40	15 3/4	40.25		
CB Neck to Waist	15 5/8	39.75	15 3/4	40	15 3/4	40	15 3/4	40	15 3/4	40.25	15 3/4	40	15 3/4	40.25	15 7/8	40.25	15 7/8	40.25	15 7/8	40.25	15 7/8	40.5	15 7/8	40.5		
Low Hip	45 1/2	115.75	47 1/2	120.75	49 1/2	125.75	51 1/2	130.75	53 1/2	136	55 1/2	141	57 1/2	146	59 1/2	151	61 1/2	156.25	63 1/2	161.25	65 1/2	166.25	67 1/2	171.5		
Inseam	27 5/8	70	27 1/2	69.75	27 3/8	69.5	27 1/4	69.25	27	68.75	26 3/4	68	26 1/2	67.5	26 1/4	66.75	26	66	25 3/4	65.5	25 1/2	64.75	25 1/4	64.25		
Total Rise	29 3/8	74.75	30 1/2	77.5	31 5/8	80.5	32 3/4	83	33 5/8	85.5	34 7/8	88.5	35 7/8	91.25	37 1/8	94.25	38 1/4	97.25	39 3/8	100	40 1/2	102.75	41 3/4	106		
Thigh	26 1/2	67.25	27 5/8	70.25	28 3/4	73	29 7/8	76	30 7/8	78.5	31 7/8	80.75	32 7/8	83.25	33 7/8	86	34 7/8	88.5	36	91.25	37	93.75	38	96.5		
CB Neck to Wrist	29 7/8	76	30 1/4	76.75	30 5/8	77.75	31	78.75	31 1/8	79	31 1/4	79.25	31 3/8	79.75	31 5/8	80.25	31 7/8	81	32	81.25	32 1/4	81.75	32 1/2	82.5		
Bicep	14 1/8	35.75	14 3/4	37.5	15 3/8	39	16	40.75	16 5/8	42.25	17 1/4	43.75	17 7/8	45.25	18 1/2	46.75	19 1/8	48.5	19 3/4	50	20 3/8	51.75	21	53.5		
Total Height	62 1/2	158.75	62 1/2	158.75	62 1/2	158.75	62 1/2	158.75	62 1/2	158.75	62 1/2	158.75	62 1/2	158.75	62 1/2	158.75	62 1/2	158.75	62 1/2	158.75	62 1/2	158.75	62 1/2	158.75		
Head Circumference	22 5/8	57.5	22 3/4	58	22 7/8	58.25	23	58.5	23 1/8	58.75	23 1/4	59	23 3/8	59.5	23 1/2	59.75	23 3/4	60.5	23 7/8	60.75	24	61	24 1/4	61.75		

INCHES
 CENTIMETERS