

(v1.2)

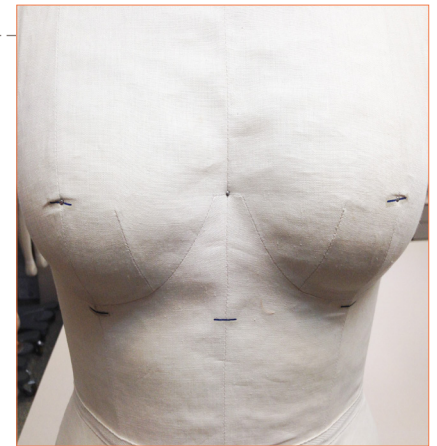
ALVAFORM CARE MANUAL

FABRIC WRINKLING PROBLEM

How to solve my fabric wrinkling problem?

The AlvaForm is covered with natural linen fabric and some wrinkling may occur in high humidity conditions (around 90% humidity).

It is recommended that the AlvaForm is stored in an air-conditioned room (85% humidity or lower) to reduce fabric wrinkling.



Tools Required

- Large plastic bag (Preferably large enough to cover the entire AlvaForm)
- Scissors
- Hair Dryer
- Any hair dryer holder (like yellow pages)
- AlvaFormStand

Step 1

Cut out one of the corners of the large plastic bag.



Step 2

Place the large plastic bag around the top of the AlvaForm, with the cut corner at the top.



Step 3

Make sure that the large plastic bag covers as much of the AlvaForm as possible from top to bottom as this will trap the air inside.



Step 4



Use the hand dryer holder, such as the yellow pages below, to secure the position of the hand dryer and the direction of the hot air coming out.

Step 5



Attention: The hot air coming out of the hair dryer should be 5 minutes, repeat this process if needed. During this time, someone should be monitoring the process as a precaution.

Step 6



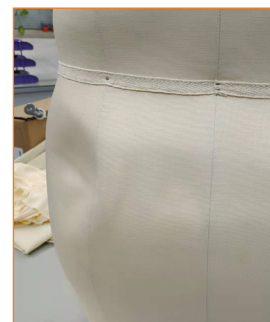
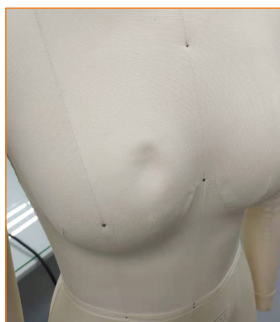
Congratulations! You have completed the drying process and the form should have returned to normal. If there are some areas of the AlvaForm still wrinkled, you can directly dry that region with the hair dryer.

IMPORTANT CARE INSTRUCTION

Do Not Iron

When Alvaform is exposed to high temperatures, it will be severely damaged and beyond repair, so we do not recommend using Ironing or steaming directly on the form.

If you ignore this symbol and use AlvaForm incorrectly, you might encounter the following situations.



CAUTION

IRONING or **STEAMING** directly on the form will damage the form and **VOID THE WARRANTY**.

Please refrain from using any tools that exert high heat onto the form. If you have any questions, please contact our customer service.

MOLD PREVENTION

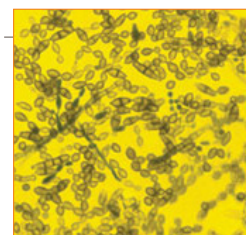
Mold Prevention on AlvaForms

AlvaForms are wrapped by layers of linen and cotton rib. The fabric will absorb the moisture in the air when the AlvaForm is exposed to a humid environment, where mold can grow.



Information about Mold

Mold and mold spores are everywhere. When mold spores land on a damp spot indoors, they may begin growing. It is important to maintain a clean and dry environment, such as an air-conditioned room.



CAUTION

There is **NO** practical way to eliminate all molds and mold spores in the indoor environment. The way to control indoor mold growth is to **CONTROL MOISTURE**.

MOLD PREVENTION – FAVORABLE HUMIDITY FOR MOLDING

Humidity **above 70%** can easily lead to mold growth.

Recommendations

Use a humidity indicator to measure the relative humidity

Recommended Relative Humidity Level for Clients:

Summer:
50-55%

Winter:
30-35%

Air Circulation

Air circulation helps control moisture levels through evaporation.

Recommendations

The followings can be installed in localized areas to improve air circulation, for example in design studio:

- Portable dehumidifier
- Fan

Cleanliness

Keeping things clean in the storage area, as the dirt, may also prevent mold from growing.

CAUTION

The following sources where mold is likely to grow should be kept clean:

- Walls
- Closets
- Basements
- Clothing and other textiles

