

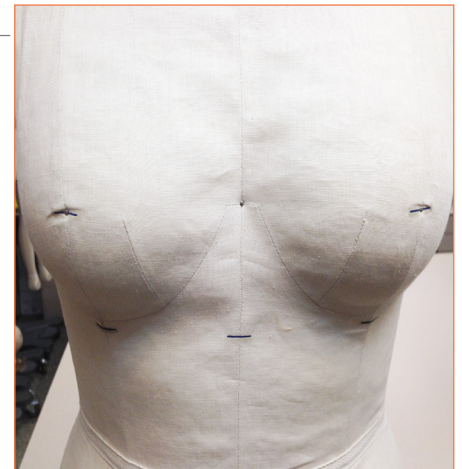
## ALVAFORM CARE MANUAL

### FABRIC WRINKLING PROBLEM

#### How to solve my fabric wrinkling problem?

The AlvaForm is covered with cotton linen fabric and some wrinkling may occur in high humidity conditions (around 90% humidity).

It is recommended that the AlvaForm is stored in an air-conditioned room (85% humidity or lower) to reduce fabric wrinkling.



#### OPTION 1

##### Tools Required

- Large plastic bag (Preferably large enough to cover the entire AlvaForm)
- Scissors
- Hair Dryer
- AlvaFormStand

#### Step 1

Cut out one of the corners of the large plastic bag.



#### Step 2

Place the large plastic bag around the top of the AlvaForm, with the cut corner at the top.



#### Step 3

Make sure that the large plastic bag covers as much of the AlvaForm as possible from top to bottom.



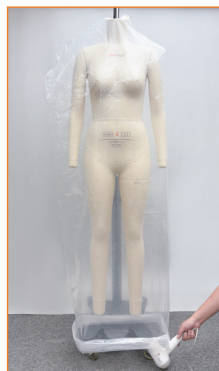
#### Step 4

Use a hair dryer to blow warm (not hot) air from the bottom of the plastic bag.



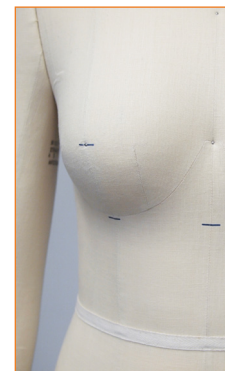
#### Step 5

Use the hair dryer at high fan setting with warm (not hot) air for 5 minutes. You may need to repeat this process if wrinkles are not fully eliminated.



#### Step 6

Congratulations! You have completed the drying process and the form should have returned to normal. If there are some areas of the AlvaForm that are still wrinkled, you can directly dry that region with the hair dryer.



## FABRIC WRINKLING PROBLEM

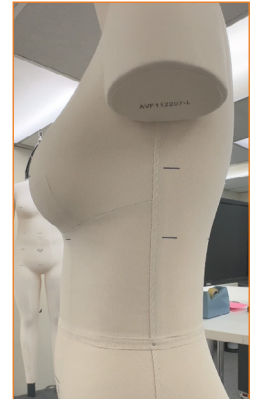
### OPTION 2

#### Tools Required

- Hair Dryer
- Spray bottle or brush
- AlvaFormStand



Before



After

#### Step 1

Use a spray bottle or a damp brush to gently and evenly moisten the wrinkled area (stop when the fabric slightly darkens).



#### Step 2

Use warm or cool air to dry the moistened area completely (avoid applying pressure to the area while drying to prevent damage to the Alvaform).



#### Step 3

If minor wrinkles remain, gently smooth out the wrinkled area using your hand.

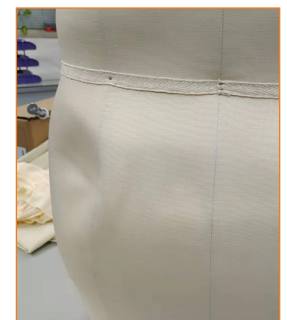
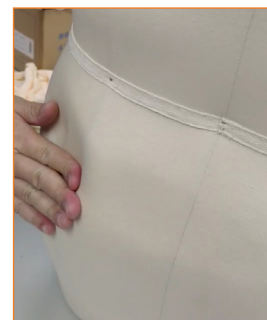
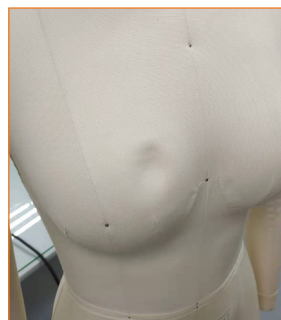


## IMPORTANT CARE INSTRUCTION

### Do Not Iron

When Alvaform is exposed to high temperatures, it will be severely damaged and cannot be repaired. Avoid ironing or steaming directly on the form.

If you ignore this warning and use the AlvaForm incorrectly, you may encounter the following scenarios.



#### CAUTION

**IRONING** or **STEAMING** directly on the form will damage the form and **VOID THE WARRANTY**.

Please refrain from using any tools that exert high heat onto the form. If you have any questions, please contact our customer service.

## MOLD PREVENTION

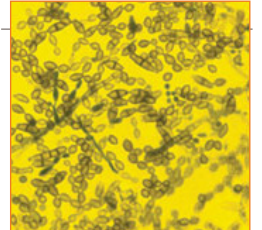
### Mold Prevention on AlvaForms

AlvaForms are wrapped by layers of cotton linen and cotton rib. The fabric will absorb the moisture in the air when the AlvaForm is exposed to a humid environment, where mold can grow.



### Information about Mold

Mold and mold spores are everywhere. When mold spores land on a damp spot indoors, they may begin growing. It is important to maintain a clean and dry environment, such as an air-conditioned room.



#### CAUTION

There is NO practical way to eliminate all molds and mold spores in the indoor environment. The way to control indoor mold growth is to **CONTROL MOISTURE**.

## MOLD PREVENTION – FAVORABLE HUMIDITY FOR MOLDING

Humidity **above 70%** can easily lead to mold growth.

### Recommendations

Use a humidity indicator to measure the relative humidity

### Recommended Relative Humidity Level for Clients:

Summer:  
50-55%

Winter:  
30-35%

### Air Circulation

Air circulation helps control moisture levels through evaporation.

### Recommendations

The followings can be installed in localized areas to improve air circulation, for example in design studio:

- Portable dehumidifier
- Fan

### Cleanliness

Keeping things clean in the storage area, as the dirt, may also prevent mold from growing.



#### CAUTION

The following sources where mold is likely to grow should be kept clean:

- Walls
- Closets
- Basements
- Clothing and other textiles